

NEWSLETTER

FRIDAY 1ST MARCH 2024



HPAN

Well done to the AMAZING children from Ravens Class who wowed a huge audience at the Foundry in Widnes with their fabulous ukulele and singing skills.

They had lots of fun joining 4 other schools from across Halton to perform as part of the Halton Primary Arts Network, under the theme 'A Wonderful World'.

Seesaw



Following feedback from our school survey, next week you will be getting an invite to an app called Seesaw. This app is used already in school to record what the children are learning and will help you to see the fun activities your children get up to.

You will be given an agreement to sign, to say that you won't share the images on social media. Once you have returned this, you will be given details of how to join your child's Seesaw 'page'.

World Book Day

This year World Book Day will take place on Thursday 7th March. Instead of dressing up as a character we would like the children to dress up as a word - 'wear a word'.

For example, you could pin the word 'precious' to you and wear lots of jewellery, You could wear the word 'flamboyant' and come wearing a pink tutu, etc.

Children can still wear character costumes but with a word attached so a dressing up costume of Willy Wonka could wear the word 'preposterous'. They could come in their own clothes and wear the word 'casual' if they like.

We are looking forward to seeing the children's (and your) creativity.



Goodbye and Good luck

Our School Community would like to wish Harley and Kathleen all the best with their new adventure, they will be missed by us all.

Key Dates

Friday 1st March
School Sleepover

Thursday 7th March
World Book Day

Friday 8th March
Owls Mother's Day
Celebration

**Tuesday 12th March -
2pm**
Parents Sleep and
Screens Session

**Tuesday 26th March -
5pm**
Easter Bingo

Thursday 28th March -
Break up for Easter
Holidays

School Sleepover

Thank you to those of you who signed up for the Sleep Over.

The funds raised will help towards covering coach costs to school trips.

Also, thank you for your donations of chocolate for the Easter Bingo- details to follow.



FREE



Digital Arts Box

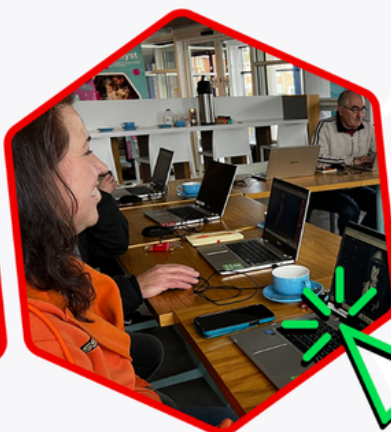


digital drop-in

Try photo editing or get tech help!

JOIN US TO...

- Use a laptop keyboard and mouse
- Access the internet
- Create an email address
- Send and receive emails
- Online shopping and banking
- Use the internet safely
- Search for jobs online
- Access tech support
- Share files online



dates & times

Wednesdays

21/2 at 10 am - 12 pm

28/2 - 20/3 at 10 am - 1 pm

location

Grangeway Community

Centre Cafe,

Runcorn, WA7 5HA

sign up now:

- INFO@DIGITALARTSBOX.ORG
- 0151 433 2223
- WWW.DIGITALARTSBOX.ORG

SCAN ME





Children's Centre Activities	Birth Registration	Debt & Welfare Advice	Domestic Abuse Support	Speech, Language and Communication	Families Information Service	Health Visitor
Housing Support or Advice	Infant Feeding Support	Locality Team for Family Support	Mental Health Services	Midwife / Maternity Services	Nutrition & Weight Management	Oral Health Improvement
Peri Natal Mental Health & Parent Infant Relationship	Parenting Programme or Intervention	SEND Support	Stop Smoking Support	Substance Misuse & Drug and Alcohol Support	Support for separating & separated parents	Youth Support Services

Halton's Family Hubs / Children's Centres support children and young people from birth until they reach the age of 19 (or up to 25 for young people with special educational needs and disabilities).

They bring council, health and community services together so that families can access the right support at the right time.

Halton's Family Hubs will provide a mix of physical and virtual spaces, as well as outreach, where families can easily access non-judgmental support for the challenges they may be facing.

All the services shown above would all fall under the family hub umbrella.

Healthwatch Halton are currently working with the Family Hubs to gather people's views on the services offered.

If you are a current user of any of the services shown above, we'd like to hear your views.

If you've not yet used a Family Hub / Children's Centre, we'd like to find out some of the reasons why.

To take part in the survey click the link below or use the QR code

<https://online1.snapsurveys.com/hfh23>

